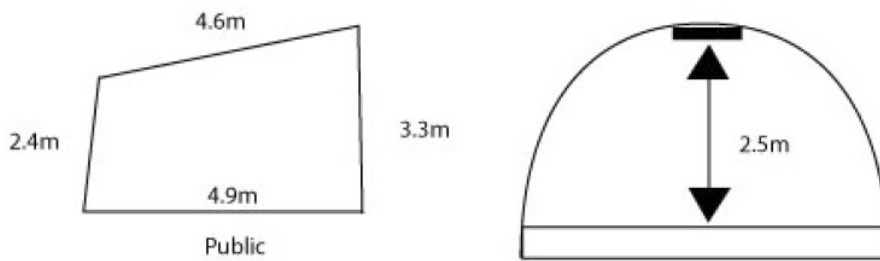
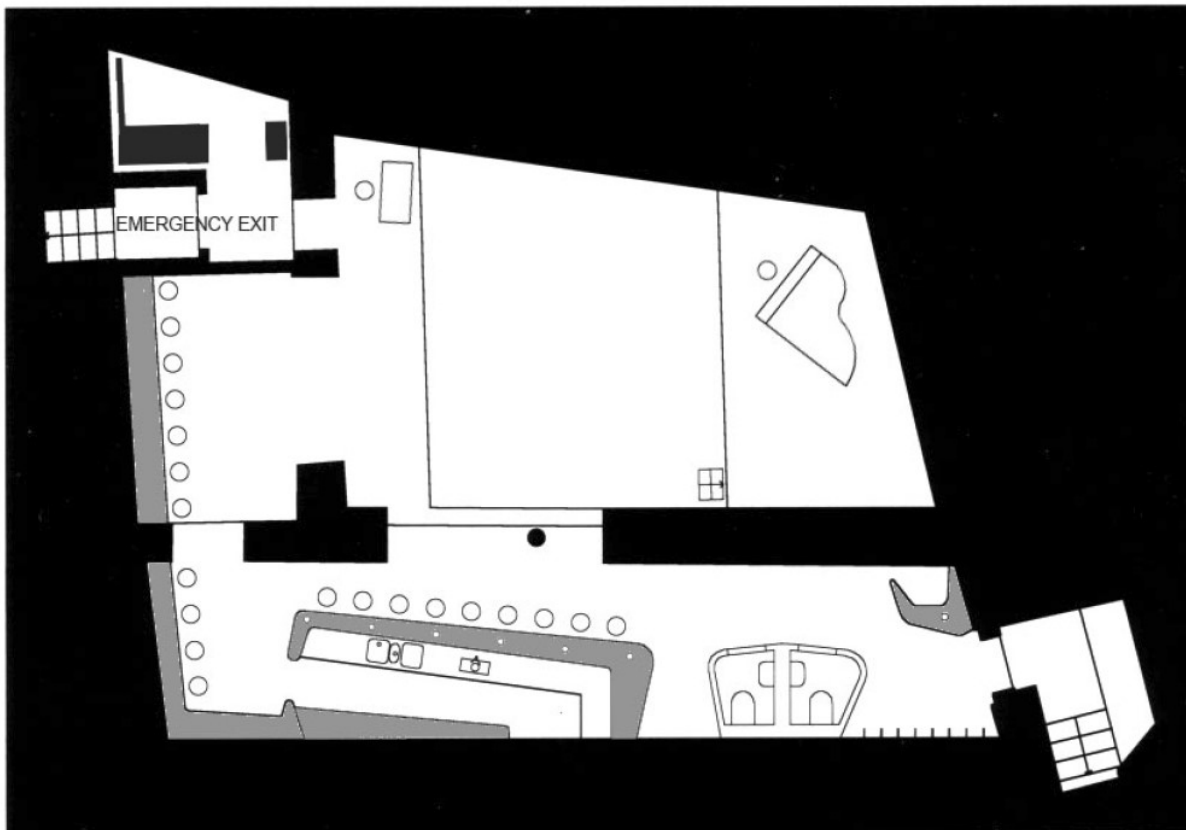


Shape of the Stage in La Spirale since 2003



Overview of the all venue since 2003.



Some Pictures

<http://www.laspirale.ch/infos-pratiques-2/informations-techniques/>

BACKLINE

[PIANO Yamaha S4 \(2004\)](#)

[FENDER RHODES MARK II + Nord Stage 3 88](#)

[DRUM SET Yamaha Recording Custom \(1997\)](#)

Bass 20" or Bass 18"

Floor-Tom 14", Tom 12", Tom 10"

Snare 13 x 3,5" + Snare 14 x 5,5" [Lauper Drums](#)

4 x Cymbal stand, Hi-Hat stand, Snare stand, 2 x Bass drum pedal

Seat, Carpet, All heads white-coated ([Remo Ambassador](#))

CONTREBASSE

Origine: [Anton Holzlechner](#) 1998, D - Neumarkt St Veit

Masse / Korpuslänge 109 cm / Mensur 103,5 cm / Breite Oberbügel 49 cm / Breite Unterbügel 65 cm / Zargenhöhe 21 cm

Material: Decke Fichte, Hals, Boden und Zargen Ahorn schlicht; gelbbrauner Lack Zustand: sehr gut

BASS AMPLIFIERS

[David Eden](#) 4x10" with amp head Traveller Series

[Phil Jones Pure Sound Super Flightcase BG-300](#)

GUITAR AMPLIFIERS

[Fender Twin Reverb](#) (2x)

[Roland Jazz Chorus JC120](#) (1x)

CAUTION: Except if decided otherwise, nothing else will be rented!!!



FICHE TECHNIQUE

CAPACITE DE LA SALLE

100 places assises / 150 places debout

SON

Table de mixage digitale [Yamaha QL1](#) + MY4-DA + MY4-AD
16 entrées mic + line
4 lignes retours séparées
2 aux stéréo send & return

FOH 2 Audio Performance MP8 - amp.
2 Audio Performance SUB1 - amp.

Moniteurs 4 Audio Performance MP8 – amp
2 Audio Performance MP10 – amp

Egaliseurs 3 Klark Technics DN 370

Compresseur 1 Klark Technics DN 504

Effets 1 Lexicon 300 (Reverb)
1 TC Electronic Delay
1 Yamaha SPX 900 (Multi-Effets)

Micros 9 Shure SM58
2 Shure SM57
2 Shure Beta 58
2 Shure SM81
1 AKG D112
1 AKG D310
1 Sennheiser MD431
4 Sennheiser 604
2 Sennheiser 609
1 Audio Technica AT 853A
4 Neumann KM 184
4 DI Klark Technics
1 Ultra Di 8 canaux Behringer

Enregistrement Tascam HD-R1

ECLAIRAGE

Spots 20 Dedolight 150W
8 PAR 16

Régie 1 Régie ETR Luna 24 (24 circuits Digital DMX)

Bloc 2 MA Lighting (24 x 2.3 kW)