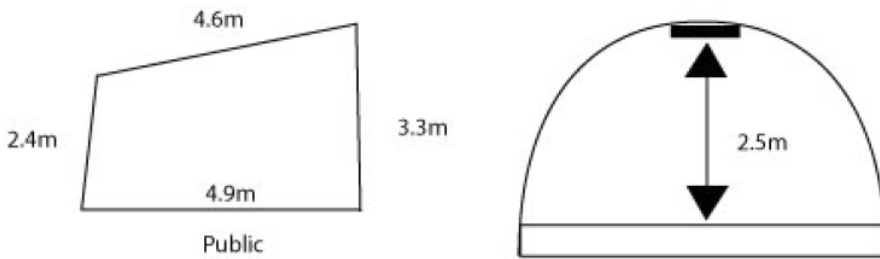
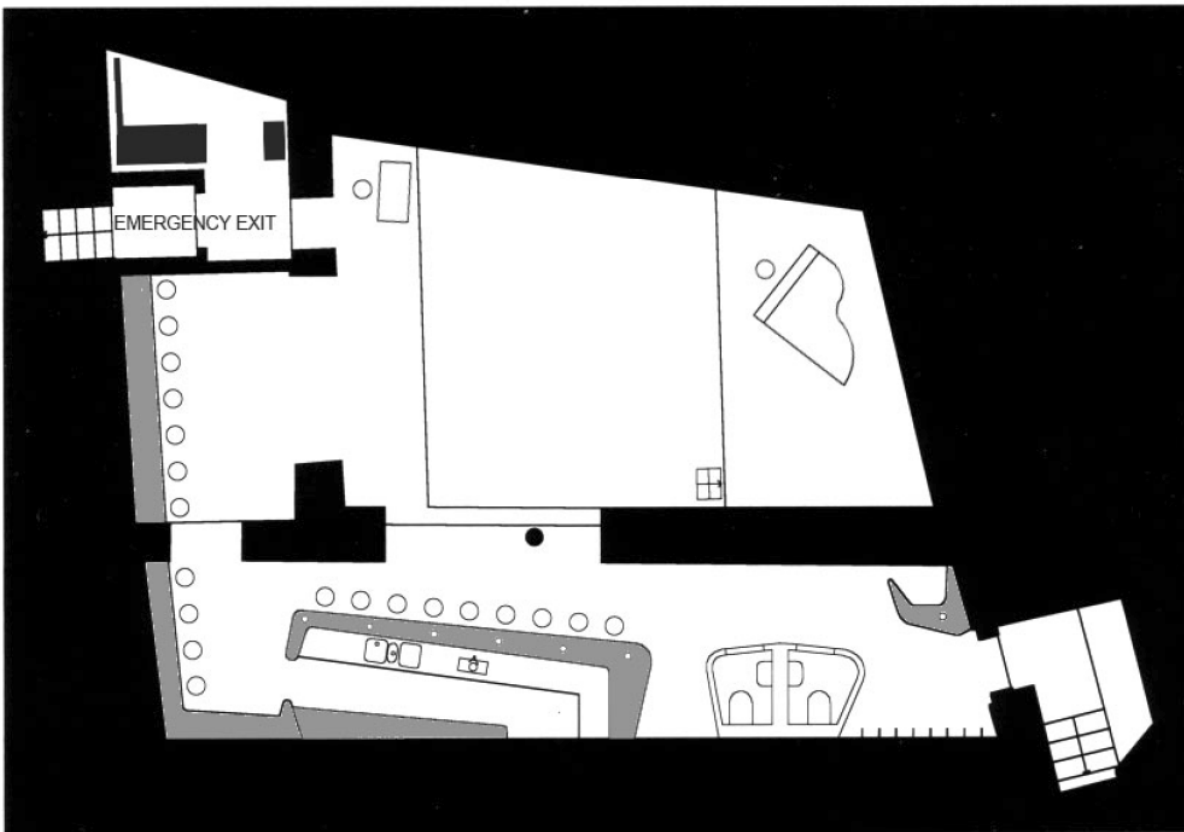


## Shape of the Stage in La Spirale since 2003



## Overview of the all venue since 2003.



Some Pictures

<http://www.laspirale.ch/infos-pratiques-2/informations-techniques/>

## BACKLINE

### PIANO Yamaha S4 (2004)

### DRUM SET Yamaha Recording Custom (1997)

Bass 20" or Bass 18"  
Floor-Tom 14"  
Tom 12"  
Tom 10"  
Snare 13 x 3,5"  
Snare 14 x 5.5" [Lauper Drums](#)  
4 x Cymbal stand  
Hi-Hat stand  
Snare stand  
2 x Bass drum pedal  
Seat  
Carpet  
All heads white-coated ([Remo Ambassador](#))

## BASS AMPLIFIERS

[David Eden](#) 4x10" with amp head Traveller Series  
[Phil Jones Pure Sound Super Flightcase BG-300](#)

## GUITAR AMPLIFIERS

[Fender Twin Reverb](#) (2x)  
[Roland Jazz Chorus JC120](#) (2x)

**CAUTION: Except if decided otherwise, nothing else will be rented!!!**



## FICHE TECHNIQUE

### CAPACITE DE LA SALLE

100 places assises / 150 places debout

### SON

Table de mixage digitale [Yamaha QL1](#) + MY4-DA + MY4-AD  
16 entrées mic + line  
4 lignes retours séparées  
2 aux stéréo send & return

FOH  
2 Audio Performance MP8 - amp.  
2 Audio Performance SUB1 - amp.

Moniteurs  
4 Audio Performance MP8 – amp  
2 Audio Performance MP10 – amp

Egaliseurs  
3 Klark Technics DN 370

Compresseur  
Effets  
1 Klark Technics DN 504  
1 Lexicon 300 (Reverb)  
1 TC Electronic Delay  
1 Yamaha SPX 900 (Multi-Effets)

Micros  
9 Shure SM58  
4 Shure SM57  
2 Shure SM81  
2 AKG C1000S  
1 AKG D112  
1 Sennheiser MD431  
2 Sennheiser 604  
1 Sennheiser 609  
4 Neumann KM 184  
4 DI Klark Technics  
1 Ultra Di 8 canaux Behringer

Enregistrement  
Tascam HD-R1

### ECLAIRAGE

Spots  
20 Dedolight 150W  
8 PAR 16

Régie  
1 Régie ETR Luna 24 (24 circuits Digital DMX)

Bloc  
2 MA Lighting (24 x 2.3 kW)