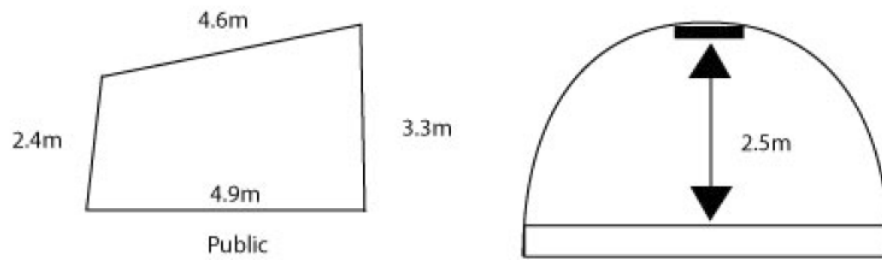
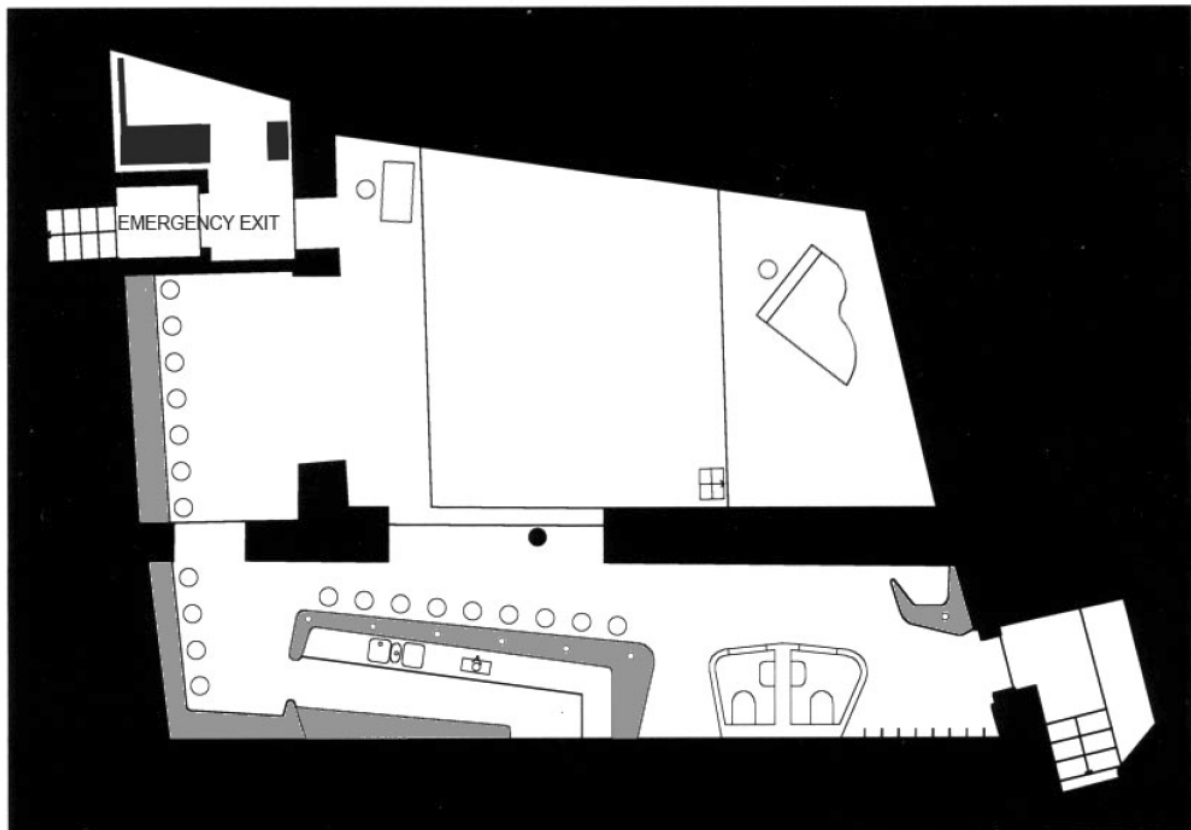


## Shape of the Stage in La Spirale since 2003



## Overview of the all venue since 2003.



Some Pictures

<http://www.laspirale.ch/infos-pratiques-2/informations-techniques/>

## BACKLINE

**[PIANO Yamaha S4](#) (year 2004)**

## **DRUM SET Yamaha Recording**

Bass 20" or Bass 18"  
Floor-Tom 14"  
Tom 12"  
Tom 10"  
Snare 13 x 3,5"  
A choice of 2 [Lauper Drums](#) Snare 14 x 5.5"  
4 x Cymbal stand  
Hi-Hat stand  
Snare stand  
Bass drum pedal  
Seat  
Carpet  
All heads white-coated (Remo Ambassador)

## **BASS AMPLIFIERS**

David Eden 4x10" with amp head Traveller Series  
[Phil Jones Pure Sound Super Flightcase BG-300](#)

## **GUITAR AMPLIFIERS**

Fender Twin Reverb (2x)  
Roland Jazz Chorus JC120 (2x)

**CAUTION: Except if decided otherwise, nothing else will be rented!!!**





[www.laspirale.ch](http://www.laspirale.ch)

Petit-Saint-Jean 39 | CP 1373 | 1701 Fribourg | Mail: [info@laspirale.ch](mailto:info@laspirale.ch) | Tél. 0041 (0)26 322 66 39

## FICHE TECHNIQUE

### CAPACITE DE LA SALLE

110 places assises / 150 places debout

### SON

Table de mixage	Midas Venice 240 16 entrées + 4 stéréo + 4 retours effets / 4 sous-groupes 6 auxiliaires (2 post, 2 pre, 2 switch) Égalisation 4 bandes dont 2 paramétriques
FOH	2 Audio Performance MP8 - amp. 2 Audio Performance SUB1 - amp.
Moniteurs	4 Audio Performance MP8 - amp.
Egaliseurs	3 Yamaha Q2031B (FOH L+R, 4 lignes monitor)
Compresseur	1 Klark Technics DN 504
Effets	1 Lexicon 300 (Reverb) 1 Yamaha PRO R3 (Reverb) 1 Yamaha SPX 900 (Multi-Effets)
Micros	9 Shure SM58 3 Shure SM57 2 Shure Beta 58 2 Shure SM81 1 AKG D112 1 AKG D310 1 Sennheiser MD431 4 Sennheiser 604 2 Sennheiser 609 1 Audio Technica AT 853A 4 Neumann KM 184 2 DI Behringer 1 Ultra Di 8 canaux Behringer
Enregistrement CD	Tascam HD-R1 Sandisk recorder with 2 Neuman KM184

### ECLAIRAGE

Spots	20 Dedolight 150W 8 PAR 16
Régie	1 Régie ETR Luna 24 (24 circuits Digital DMX)
Bloc	2 MA Lighting (24 x 2.3 kW)